



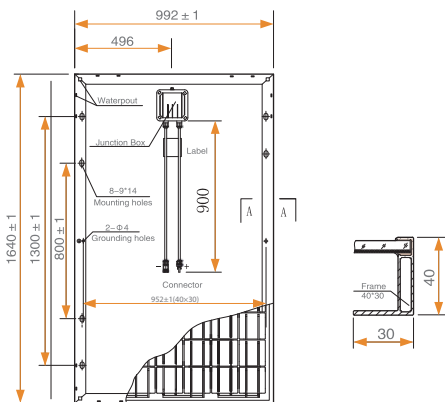
# EHT250P-60

## 250 Watt Polycrystalline Module

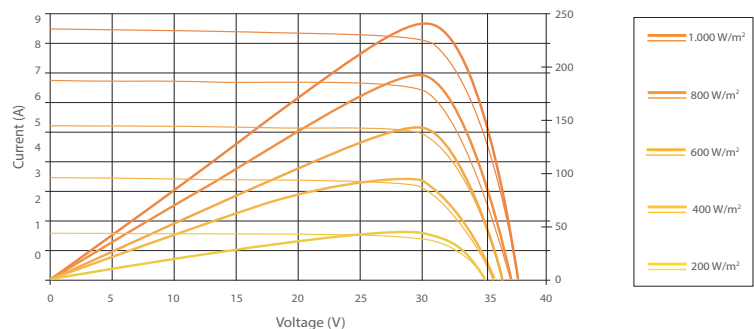
*Durability, Sustainability, Reliability*

The EHT250 is one of the quality products offered from our 100,000 ft<sup>2</sup> Welland, Ontario, manufacturing facility. It is designed for commercial applications ranging from industrial rooftops to ground mounting on rugged rural pastures. Manufactured to meet ISO 9001, 14001 and 18001 standards this quality of module is a sturdy example of quality solar.

### Dimensions of the PV module



### I-V Curves of the PV module



## Electrical Data



High module conversion efficiency up to 15.27 %



Insured output warranty of 25 years



Green Certification: PV-Cycle, Carbon Footprint and RoHS



Without Potential-Induced Degradation (PID-free)



Resistant against ammonia and salt mist



Certified to withstand extreme snow-loads of 5.400 Pascal

Nominal Power Watt $P_{max}$ ( $W_p$ )	250
Power Output Tolerance $P_{max}$ (%)	0 ~ +3
Maximum Power Voltage $V_{max}$ (V)	30.15
Maximum Power Current $I_{MPP}$ (A)	8.29
Open Circuit Voltage $V_{oc}$ (V)	37.89
Short Circuit Current $I_{sc}$ (A)	8.61
Module Efficiency $\eta_m$ (%)	15.37
Cell Efficiency $\eta_c$ (%)	17.44

[info@ehybrid.com](mailto:info@ehybrid.com)

